



USER MANUAL / MANUAL PËRDORIMI  
BEDIENUNGSANLEITUNG / ПАСПОРТ НЗДЕПНЯ

- EN** Mounting instructions
- DE** Montageanleitung
- RU** Инструкция по монтажу
- FR** Instruction de montage
- AL** Udhëzimet e përdorimit
- ESP** Instrucciones de montaje
- GR** οδηγίες τοποθέτησης
- RO** Instrucțiunile de montaj
- BG** указания за монтаж
- RS** Uputstvo za montazu
- UA** інструкція по монтажу
- AR** تعليمات التركيب

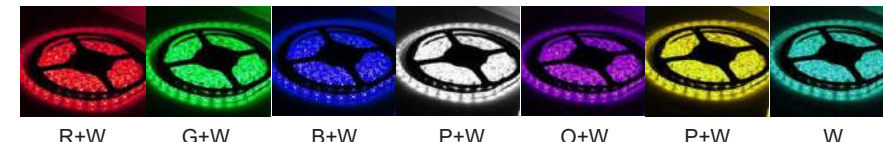
LED Flexible Strips



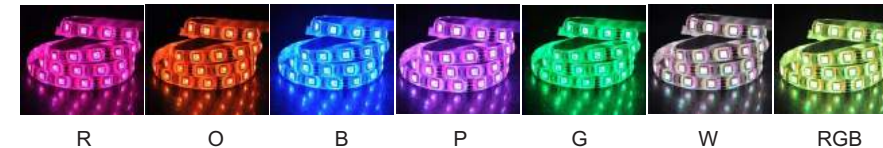
LED Strip Light

An LED Strip Light is a flexible circuit board populated by LEDs and other components that usually comes with an adhesive backing. It had been used solely in accent lighting, backlighting, task lighting and decorative lighting applications. Water resistant strip light can protect the circuitry from direct contact with water, highly expanding its range of uses.

5050 RGB+W



5050 RGB

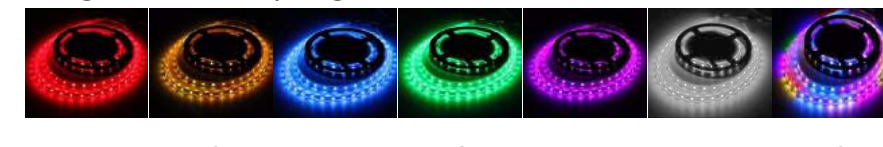


3528/2835 RGB



SMD 3528/2835 RGB Strip light can't display white light

Single-color Strip Light

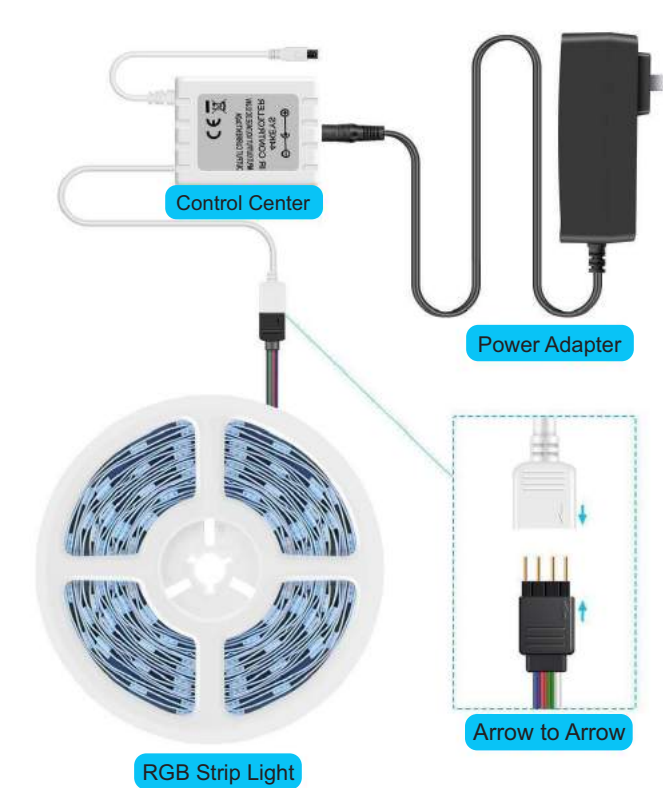


Specification

SMD Type	5050		3528/2835	
Optional Light Color	Single Color		Single Color	
	RGB/RGBW RGBWW	Warm White/ Cool White/Red Green/Blue/Yellow Pink/Purple	RGB	Warm White/ Cool White/Red Green/Blue/Yellow Pink/Purple
Control With	Controller	Dimmer	Controller	Dimmer
Compatible Adapter	12V/24V		12V/24V	
LED Chip Size	5*5mm		3.5*2.8mm	
Length	5M(16.4ft) 10M (32.8ft)			
Working Temperature	-20 C-50 C			
Beam Angle	120			
Ingress Protection	Waterproof (IP65/IP67/IP68) Non-waterproof			



How to connect the LED strip lights



Connecting Instruction of Single-color Strip Light and Dimmer



Specification

SMD Type	5050	3528/2835
Single Color	Warm White/Cool White/Red/Green/ Blue/Yellow/Pink/Purple	Warm White/Cool White/Red/Green/ Blue/Yellow/Pink/Purple
Luminous Flux	10-12LM/Per LED	4-5LM/Per LED
LED Chip Size	5*5mm	3.5*2.8mm
Power	0.16-0.18W/Per LED	0.06W/Per LED
Ingress Protection	Waterproof(IP65/IP67/IP68) or Non-waterproof	

